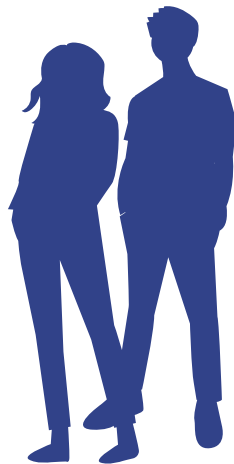
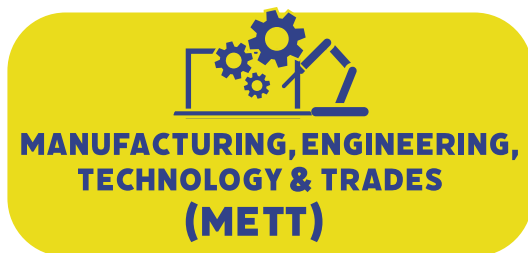


ROUND LAKE SENIOR HIGH SCHOOL D116

PATHWAY GUIDE

Where can I go? Who Can I Become?



DEFINING CAREER PATHWAYS

ROUND LAKE HIGH SCHOOL D116



Technology and Engineering education is the study of human innovation, which provides an opportunity for students to apply and manage knowledge and resources related to the human made world. It incorporates collaborative, application-oriented, activity-based strategies used to develop creative thinking skills while solving real-world problems. The study of technology and engineering education prepares students to become lifelong contributing members of our technological society who comprehend the impact of technology and use it to improve the quality of life for all people.



The AFNR Career Cluster focuses on the essential elements of life—food, water, land, and air. This includes a diverse spectrum of occupations, ranging from farmer, rancher, and veterinarian to geologist, land conservationist, and florist. It also includes non-traditional agricultural occupations like wind energy, solar energy, and oil and gas production. Courses in the AFNR are designed to prepare learners for careers in the planning, production, processing, marketing, distribution, financing, and development of agricultural commodities, services, and natural resources, including food, fiber, wood products, water, minerals, and petroleum.



The AAVTC pathway focuses on careers in designing, producing, exhibiting, performing, writing, and publishing multimedia content including visual and performing arts and design, journalism, and entertainment services. Careers in AAVTC require a creative aptitude, a strong background in computer and electric-based technology applications, a strong academic foundation in math and science, and a proficiency in oral and written communication.



Illinois Finance and Business Services (FBS) builds skills in communications, information systems/technology, digital literacy, financial procedures, economics, entrepreneurship, international business principles of management and law, interpersonal and leadership skills, career development and marketing. FBS helps students become college and career ready through the critical thinking and real-world application of FBS skills. Students develop the academic knowledge and technical skills for a lifetime of opportunities as productive and responsible citizens. These experiences actively rely on use of technology and current and emerging business practices and procedures.



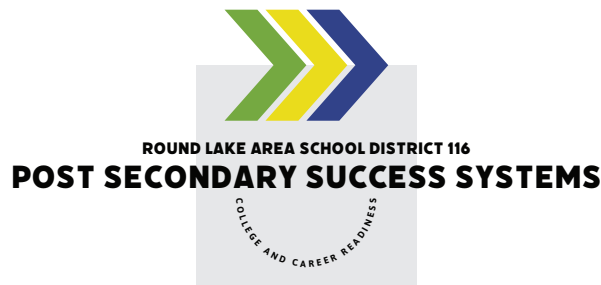
The Human and Public Services prepares individuals for jobs related to the needs of individuals, groups, and society, leading to career opportunities in education and training, government and public administration, law, public safety, corrections, and security and human services, along with personal care services. Individuals might work in schools, daycares, government agencies, law offices, hospitals, salon or spas, or in the community.



Illinois Information Technology (IT) builds skills in communications, information systems/technology, digital literacy, entrepreneurship, interpersonal and leadership skills, career development computer concepts/programming/networking, & web page/media development. IT helps students become college and career ready through the critical thinking and real-world application of IT skills. By taking IT courses, students develop the academic knowledge and technical skills for a lifetime of opportunities as productive and responsible citizens. These experiences actively rely on use of technology and current and emerging business practices and procedures.



Health Sciences and Technology careers focus on the care leading to improvement of health and wellness. The HST career cluster involve pathways to Therapeutic Services, Diagnostic Services, Health Informatics, Support Services, and Biotechnology Research and Development. The high demand with rapid technological advances has led to emerging needs in the field of healthcare. These careers involve direct/in-direct patient care at hospitals, clinics, assisted and long-term facilities, home, research centers, schools, and/or offices.



DUAL CREDIT

Student Infoguide



WHAT IS DUAL CREDIT?

An instructional arrangement where an academically qualified student currently enrolled in high school enrolls in a college-level course and, upon successful course completion, earns both college credit and high school credit.

WHY DUAL CREDIT?

Taking a Dual Credit Course in high school...

- Reduce college costs
- Speeds time to degree completion
- Improves the curriculum for high school students and the alignment of the curriculum with college and workplace expectations
- Enhances communication between high schools and colleges
- Offers opportunities for improving degree attainment for underserved student populations.

AM I ELIGIBLE TO TAKE DUAL CREDIT?

- Meet course prerequisites, when applicable
- Be currently enrolled in an Illinois high school and live in Illinois
- School submits official SAT scores (if available)
- Register for a dual credit course at your high school
- Take the Academic Language Proficiency Test (or have an ACT score of at least 17 in both English and Reading)
- Take the Academic Proficiency Test (if required for prerequisite)
- Be successfully enrolled at mid-term
- Complete the Admission Information form online in class



MANUFACTURING, ENGINEERING, TECHNOLOGY & TRADES (METT)



HIGH SCHOOL COURSES			
9 English 1	10 English 2	11 English 3	12 English 4
Math 1	Math 2	Math 3	Math
Biology	Chemistry	Physics	Science Elective
Human Geography	Western/Non-Western Civilization	US History	Economics / Government
PE/Health	Wellness	Wellness	Wellness

EXPLORE ELECTIVES			
PLTW	Engineering Design and Development Honors (EDD PLTW)		TECH CAMPUS
Introduction to Engineering (IED PLTW)	Digital Electronics (DE PLTW)	Business Structures	Auto-body/Collision and Repair Technology/Technician
Principles of Engineering (POE PLTW)	PLTW LAB TECH	Mobile Makers 1 & 2	Automotive Mechanics Technology/Technician
			Construction Trades
			Welding Technology/ Welder

CLUBS & ACTIVITIES		
Student Council	Robotics	Chess Team
RL Ambassadors	Speech Team	Math Team
SOMOS	Any STEM related club	Women in STEM

COMMUNITY PARTNERS		
Lake County Tech Campus		Maker Faire Lake County
Takeda		Advanced Technology Center of Lake County
Foundation for Fair Contracting	Baxter	CISCO



COLLEGE MAJORS OR PROGRAMS

Aerospace Engineering Air Traffic Controller Architectural Drafting Automotive Engineering Chemical Engineering Civil Engineering Computer Engineering Construction Engineering Electrical Engineering	Energy Management Engineering Physics Engineering Technology Industrial Engineering Manufacturing Technology Mechanical Drafting Mechanical Engineering Nanotechnology Nuclear Engineering	Occupational Safety Technology Plastics Engineering Radiological Engineering Robotics Technology Systems Design Systems Engineering Tool and Die Technology
--	--	---

CAREERS!

CERTIFICATION/ ASSOCIATES DEGREE	BACHELOR DEGREE OR HIGHER
Aerospace Machinist Aircraft Mechanic Air Traffic Controller Architectural Drafter Assembler Automotive Technician/Mechanic Cargo and Freight Agent Carpenter Cartographic Technician Civil Engineering Technician CNC Programmer/Machinist Computer Technician Electrician Electronic Systems Technician Engineering Technician General Contractor/Building Helicopter Pilot HVAC Technician Industrial Machinery Mechanic Manufacturing Technician/Engineer Metrology/Measurement Mold Maker Nanotechnology Technician Pipefitter Plumber Security Consultant Sheet Metal Worker Surveyor Tool & Die Maker Warehouse Manager Welder	Aeronautical/Aerospace Engineer Airline Pilot/Co-Pilot Analytical Chemist Archaeologist Anthropologist Architect Astronaut Astronomer Aviation Biologist Botanist Cartographer Chemist Civil Engineer CNC Applications Engineer Ecologist Environmental Scientist Geologist Health & Safety Engineer Industrial Engineer Industrial Systems Engineer Interior Designer Landscape Architect Manufacturing Engineer Mechanical Engineer Nano Scientist Physicist Plant Manager Product Design Engineer Quality Assurance Inspector Safety Analyst Solar Engineer

COLLEGE OF LAKE COUNTY



PROGRAMS	CERTIFICATE/DEGREE	DUAL CREDIT
Automation, Robotics and Mechanics	Smart Automation Certification Alliance (SACA) & A.A.S.	
Automotive Collision Repair	A.A.S. & Automotive Certificate	
Automotive Technology	A.A.S.	
CAD-Drafting Technology	A.A.S. & AutoCAD or SolidWorks Certificate	
Computer Science	Transfer Program	
Electrical Engineering Technology	A.A.S in Electrical Engineering Technology	Math in Trades
Electrician Apprenticeship		
Engineering & Computer Science	Transfer Program	
CDL (Commercial Driver's License)	Commercial Driver's License (Certification)	
Home & Building Inspection	Illinois Home Inspection License	
HVACR Engineering Technology	A.A.S. & HVAC Certificate	
Forklift Operator Training		
Industrial Technology	Transfer Program	
Welding & Fabrication Technology		

AGRICULTURE, FOOD & NATURAL RESOURCES



HIGH SCHOOL COURSES			
9 English 1	10 English 2	11 English 3	12 English 4
Math 1	Math 2	Math 3	Math
Biology	Chemistry	Physics	Science Elective
Human Geography	Western/Non-Western Civilization	US History	Economics / Government
PE/Health	Wellness	Wellness	Wellness

EXPLORE ELECTIVES		
AP Bio Tech	AP Environmental Science	Business Structures
Marketing	Design 1	Psychology Honors/AP
American Cultures	Wealth Management	Human Sustainability
Earth Science	Ecology	Biotechnology
*Science Lab Tech	Principles of Engineering (PLTW)	
TECH CAMPUS		
Principles of Bio Science		

CLUBS & ACTIVITIES			
Ambassadors	Speech Team	Health & Wellness	Golf Club
NHS	Bass Fishing	Ecology	Student Council
SOMOS	Panther Crew	Black Student Union (BSU)	Environmental Corp

COMMUNITY PARTNERS		
Lake County Forest Preserve		4H Youth Development
Prairie Farms		North Shore University Health Systems
Susanna Farms		Organic Life



COLLEGE MAJORS OR PROGRAMS

Agricultural Science
Animal Sciences
Baking and Pastry
Biotechnology
Conservation Biology
Culinary Arts
Environmental Health

Facilities Management
Food Science
Geology
Hospitality
Horticulture
Landscape Management
Marine Biology

Nutrition
Oceanography
Plant Biology
Renewable Energy
Veterinary Science
Zoology

CAREERS!

CERTIFICATION/ ASSOCIATES DEGREE

Animal Control Officer
Arborist
Bio-Tech Lab Technician
Botanist
Caterer
Chef
Concierge
Conference Planner
Conservation Worker
Crop & Livestock Farmer
Dietetic Technician
Environmental Technician
Facilities Manager
Fish and Game Officer
Food Services Supervisor
Food Quality Control Specialty
Forestry Technician
Genetic Technologist
Golf Course Manager
Greenhouse Manager
Hotel Manager
Landscape Designer
Recycling Technician
Restaurant Owner/Manager
Veterinary Technician

BACHELOR DEGREE OR HIGHER

Agricultural Engineer
Animal Husbandry
Baker
Biochemist
Conservation Scientist
Ecologist
Environmental Engineer
Event Planner
Fish and Game Warden
Forester
Geneticist
Horticulturist
Landscape Architect
Livestock Management
Marine Biologist
Museum Director
Park Ranger
Plant Pathologist
Resort Manager
Toxicologist
USDA Inspector
Veterinarian
Wildlife Conservationist
Zoologist

COLLEGE OF LAKE COUNTY



PROGRAMS

Horticulture
Landscape Design
Landscape Construction and
Maintenance
Arboriculture
Sustainable Agriculture
Horticulture Production
Natural Areas Management
Earth Science

CERTIFICATE/DEGREE

Associate in Applied Science
Certificate
Certificate
Certificate
Certificate
Certificate
Certificate
Certificate
Associate in Science

DUAL CREDIT

ARTS & COMMUNICATION



HIGH SCHOOL COURSES			
9 English 1	10 English 2	11 English 3	12 English 4
Math 1	Math 2	Math 3	Math
Biology	Chemistry	Physics	Science Elective
Human Geography	Western/Non-Western Civilization	US History	Economics / Government
PE/Health	Wellness	Wellness	Wellness

EXPLORE ELECTIVES			
Choir/ Music	Art Fundamentals	Design 1 & 2 (CTE)	Acting 1
Yearbook	Drawing 1 & 2	Digital Photo 1 & 2 (DC)	Intro to Theater
Dance	Painting	Video & Animation 1 & 2 (DC)	Digital Arts Lab Tech
Intro to Business	Ceramics & Sculpture	Capstone	
Marketing	AP Studio Art	Graphic Productions	

CLUBS & ACTIVITIES			
Ambassadors	Speech Team	Art Club (NAHS)	Student Council
NHS	Winter Guard	GSA	
SOMOS	Panther Crew	Ghost Light Theater	

COMMUNITY PARTNERS			
The Chicago Bears		Wensco	
Classic Printery		North Shore Healthcare	
Imagine Graphics		Grimco	Smith Printing



COLLEGE MAJORS OR PROGRAMS

Art/Art History Art Therapy Audio Engineering Communications Computer Graphics Design and Visual Communications Documentary Productions Fashion Design and Merchandising	Film, Video, and Photographic Arts Industrial Design Multimedia Museology Music Performance Music Therapy Museum Studies New Media	Public Relations Publishing Photography Sculpture Theatre and Performing Arts Video Game Design
---	---	--

CAREERS!

CERTIFICATION/ ASSOCIATES DEGREE	BACHELOR DEGREE OR HIGHER
Animator/Computer Graphics Artist A/V System Service Technician Broadcast Technician Business Administration Casting Director Dancer Digital Print Production Entrepreneurship Fashion Buyer/Merchandising Graphic Designer Hospitality Management Management Marketing Musician package Design Photographer Printing Press Operator Recording Technician Small Business Management Sound Technician Stage Crew Video Systems Technician Web Design Website Developer Actor	Animator Art Therapist Artist Artistic Director Audio/Visual Designer/Engineer Cinematographer Choreographer Composer Editor Costume Designer Dancer Fashion Designer Graphic Designer Interior Designer Journalist Lighting Designer Media Buyer/Planner Publisher Props Artisan Music Therapist Public Relations Manager Recording Engineer Set and Sound Designer Videographer Web Designer/Website Developer

COLLEGE OF LAKE COUNTY



PROGRAMS	CERTIFICATE/DEGREE	DUAL CREDIT
Art Communication Studies Strategic Communication Communication & Media Dance Yoga Teacher	Associate in Arts Associate in Arts Associate in Arts Associate in Applied Science Associate in Arts Certificate	
Digital Media & Design	Associate in Applied Science	DMD111
Live Entertainment Production: Music, Technical Production & Theater	Certificate Associate in Science Associate in Arts	

FINANCE & BUSINESS SERVICES



HIGH SCHOOL COURSES			
9 English 1	10 English 2	11 English 3	12 English 4
Math 1	Math 2	Math 3	Math
Biology	Chemistry	Physics	Science Elective
Human Geography	Western/Non-Western Civilization	US History	Economics / Government
PE/Health	Wellness	Wellness	Wellness

EXPLORE ELECTIVES			
Marketing	Sports Statistics	Design 1 & 2	TECH CAMPUS
Web EDU	Mobile Makers 1&2	Capstone	Cooking & Culinary Arts
Business Structures	AP Psychology	Graphic Productions	
Wealth Management	Tech Help Desk	Economics	

CLUBS & ACTIVITIES			
Ambassadors	Speech Team	BSU	Student Council
NHS	Game Club	Round Lake Design	Chess Club
Scholastic Bowl	Panther Crew	Robotics	

COMMUNITY PARTNERS		
The Chicago Bears		Gurnee Women's Business Association
Northshore Healthcare		EHS Recruiting Company
Lake County Tech Campus	Round Lake Chamber of Commerce	



COLLEGE MAJORS OR PROGRAMS

Accounting
Business Administration
Business Information Systems
Economics
Entrepreneurship
Finance
Financial Planning

Human Resources Management
Hospitality Management
Insurance
International Business/Finance
Marketing/Advertising
Management
Operations Management

Public Relations
Sports Management
Sports Marketing
Supply Chain Management

CAREERS!

CERTIFICATION/ ASSOCIATES DEGREE

Accounting Associate
Administrative Assistant
Bookkeeper
Business Administration
Business Management
Claim Adjuster
Customer Service Representative
Entrepreneur
Event Planner
Human Resource Management
Insurance Agent
Loan Officer
Marketing Associate
Real Estate Agent
Sales Representative
Supply Chain Management
Tax Preparer
Underwriter
Wholesale and Retail Buyer

BACHELOR DEGREE OR HIGHER

Accountant/CPA
Actuary
Advertising Manager
Auditor
Business Owner
Certified Financial Planner
Commodities Broker
Corporate Trainer
Economist
Entrepreneur
Event Planner
Financial Advisor/Analyst
Human Resource Director/Manager
Insurance Agent
International Business
Investment Banker
Market Research Analyst
Marketing Manager
Project Manager
Public Relations Manager
Real Estate Broker
Sales Manager
Sales Representative
Sports Management
Sports Marketing
Stockbroker

COLLEGE OF LAKE COUNTY



PROGRAMS

Accounting
Administrative Management & Technology
Business Administration
Economics
Hospitality & Culinary Management
Real Estate Licensing
Supply Chain Management

CERTIFICATE/DEGREE

Associate in Applied Science (A.A.S.)
(A.A.S.)
Transfer Program
Transfer Program
(A.A.S.) & Culinary Certificates
Real Estate License
(A.A.S.) & SCPro Certificate

DUAL CREDIT

HUMAN & PUBLIC SERVICES



HIGH SCHOOL COURSES			
9 English 1	10 English 2	11 English 3	12 English 4
Math 1	Math 2	Math 3	Math
Biology	Chemistry	Physics	Science Elective
Human Geography	Western/Non-Western Civilization	US History	Economics / Government
PE/Health	Wellness	Wellness	Wellness

EXPLORE ELECTIVES			
Current Events	Law in America	Mindful Movements	TECH CAMPUS
American Cultures	Sociology	Criminalistics	EMS/T
Speech			Firefighting
			Criminal Justice
			Early Childhood Education

CLUBS & ACTIVITIES			
RL Ambassadors	Speech Team	BSU	Student Council

COMMUNITY PARTNERS		
Round Lake Area Exchange Club		Round Lake Public Library
Mano a Mano		Lake County State's Attorney
Round Lake Fire Department	Rotary Club	Elite Ambulance



COLLEGE MAJORS OR PROGRAMS

American Government
Counseling
Criminal Justice Science
Economics
Education
Emergency Services
Global Studies

Humanities
International Studies
Journalism
Library Science
Linguistics
Political Science
Psychology

Public Administration/Policy
Public Relations
Urban/Regional Planning
World Languages

CAREERS!

CERTIFICATION/ ASSOCIATES DEGREE

911 Operator
Bomb Technician
Court Reporter
Early Childhood Teacher
Emergency Medical Technician (EMT)
Esthetician
Fire Fighter
Fire Inspector
Home Health Aide
Law Enforcement Office
Library Technician
Massage Therapist
Paralegal Assistant
Park Ranger
Personal Fitness Trainer
Police & Patrol Officer
Police Canine Trainer
Postmaster
Sign Language Interpreter
Teacher Assistant

BACHELOR DEGREE OR HIGHER

Adult Literacy Teacher
Alcohol & Drug Abuse Counselor
Attorney
Aviation Security Specialist
Certified Security Planner
Counselor
Dietician
Elementary School Teacher
FBI Agent
High School Teacher
Hospice Worker
Immigration Officer
Judicial Law Clerk
Legislator
Librarian
Music Therapist
Political Scientist
Private Detective
Probation/Parole Officer
Psychiatrist
Psychologist
Social Worker
Speech-Language Pathologist
Translator/Interpreter
University Professor

COLLEGE OF LAKE COUNTY



PROGRAMS

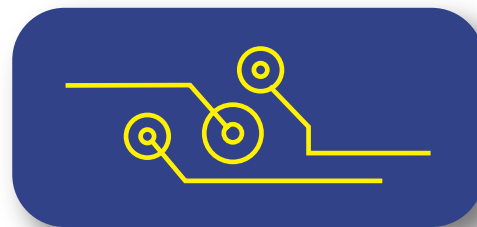
Criminal Justice
Emergency Medical Technology
Fire Science Technology
Legal Studies
Early Childhood Education
Education
Human Services
Political Science
Social Work
Sociology
Psychology

CERTIFICATE/DEGREE

Transfer Program
EMT A.A.S. & EMT Paramedic Certificate
Fire Basic Operation (FBO)
A.A.S. & Paralegal Core Competency
Early Childhood Associate in Applied Science
(A.A.S.) & Transfer Program
A.A.S. & Certified Alcohol and Drug Counselor
Transfer Program
Transfer Program
Transfer Program
Transfer Program

DUAL CREDIT

INFORMATION TECHNOLOGY

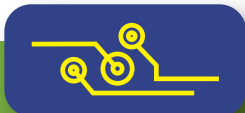


HIGH SCHOOL COURSES			
9 English 1	10 English 2	11 English 3	12 English 4
Math 1	Math 2	Math 3	Math
Biology	Chemistry	Physics	Science Elective
Human Geography	Western/Non-Western Civilization	US History	Economics / Government
PE/Health	Wellness	Wellness	Wellness

EXPLORE ELECTIVES			
Video & Animation 1 & 2 (DC)	Mobile Makers 1	Web EDU	TECH CAMPUS
Principles of Engineering (POE PLTW)	Mobile Makers 2	Tech Help Desk	Computer Programming/ Programmer General
Introduction to Engineering (IED PLTW)	Digital Electronics (DE PLTW)	Current Events	Computer Networking
			Computer Installation and Repair Technology/Technician

CLUBS & ACTIVITIES			
RL Ambassadors	Chess Club	Math Team	Scholastic Bowl

COMMUNITY PARTNERS		
Northshore Healthcare		Girls Who Code
The HUB Lake County		Lake County Tech Campus
Lake County Area Vocational System		Second Life Mac



COLLEGE MAJORS OR PROGRAMS

Architectural Engineering Artificial Intelligence Building Constructor/Management Computer Software Engineer Computer Information Systems Computer Science Computer Systems Technology Construction Engineering Cybersecurity	Digital Arts Drafting/Design Technology Information Systems Information Technology Interactive Media Interior Architecture Mechanical Drafting Networks/Communication System Development Analyst	Web App Development Web Computing
---	--	--------------------------------------

CAREERS!

CERTIFICATION/ ASSOCIATES DEGREE

App Developer
 Computer Information Systems
 Computer Programmer
 Computer Support Specialist
 Computer Systems Analyst
 Cybersecurity Technician
 Database Management
 Field Service IT Technician
 Information Systems Technician
 IT Helpdesk Technician
 Linux Administrator
 Microsoft Office Specialist
 Network Administrator
 Network Security Analyst
 Oracle Administrator
 PC Support Specialist
 Programmer Analyst
 Security Analyst
 Software Development
 Systems Operator
 Technical Support Specialist
 Unix Administrator
 Web Architect/Designer
 Website Application Developer
 Website Support
 Web Visual Designer

BACHELOR DEGREE OR HIGHER

Business Analyst
 Cloud Security Engineer
 Computer Programmer
 Cyber Security Analyst
 Data Analyst
 Data Systems Designer
 Database Administrator
 Front End Developer
 Information Technology Engineer
 iOS Developer
 IT Project Manager
 Java Engineer
 Media Specialist
 Network Analyst
 Network Engineer
 Network Security Engineer
 Scientific & Medical Illustrator
 Security Analyst
 Security Engineer
 Software Architect
 Software Engineer
 Solutions Architect
 Systems Administrator
 Systems Engineer
 Web Developer

COLLEGE OF LAKE COUNTY



PROGRAMS	CERTIFICATE/DEGREE	DUAL CREDIT
Computer Information Technology Computer Forensics Network Admin & Cybersecurity Web Programming Cisco Networking Cloud Security Computer Forensics Analyst Cybersecurity Ethical Hacker Help Desk Linux Administrator Network Administrator & Cybersecurity Programming Security+ Desktop Support Tech Enterprise Windows Administrator	Transfer Program A.A.S. A.A.S. A.A.S. & Certificate Cisco Certified Network Associate (CCNA) A.A.S in Electrical Engineering Technology Certificate in Computer Forensics Analyst Cybersecurity Certificate Ethical Hacker Certificate Illinois Home Inspection License Help Desk Certificate & CompTia A+ Certificate in Linux administration & Linux+ Network Administration and Cybersecurity Certificate CPA & CPP, C++ Security+ Certificate Desktop Support Technician Certificate Enterprise Windows Administrator Certificate	

HEALTH SCIENCES & TECHNOLOGY



HIGH SCHOOL COURSES			
9 English 1	10 English 2	11 English 3	12 English 4
Math 1	Math 2	Math 3	Math
Biology	Chemistry	Physics	Science Elective
Human Geography	Western/Non-Western Civilization	US History	Economics / Government
PE/Health	Wellness	Wellness	Wellness

EXPLORE ELECTIVES		
Anatomy & Physiology Honors	Genetics & Society: Biotechnology (DC)	AP Biology
Childcare 101	Criminalistics: Intro to Forensic Science	Intro to Engineering Design (IED)
AP Psychology	Science Lab Tech (.25 credits)	World Language French & Spanish
Sports Medicine	Mobile Makers 1 & 2	
		TECH CAMPUS
		CNA
		Medical Assisting
		EMT/S

CLUBS & ACTIVITIES			
Ambassadors	Speech Team	Scholastic Bowl	Student Council
NHS	Environmental	SWE	
Future Medical Panthers	Panther Crew	Robotics	

COMMUNITY PARTNERS		
Baxter		
Northshore Healthcare		
Northwestern University	Lake County Tech Campus	



COLLEGE MAJORS OR PROGRAMS

Any Science Applied Psychology Athletic Training Bioethics Biotechnology Clinical Research Community Health Dentistry Dietetics	Food and Nutrition Genetic Counseling Kinesiology Medicine Molecular Medicine Music Therapy Nursing (RN and BSN) Occupational Therapy Optometry	Orthodontics Pharmacy Psychology Psychiatry Physical Therapy Speech Pathology Sports Medicine Veterinary Medicine
---	---	--

CAREERS!

CERTIFICATION/ ASSOCIATES DEGREE

Anesthesiologist Assistant
Certified Nursing Assistant
Clinical Medical Assistant
Dental Assistant
Dental Hygienist
Diagnostic Medical Sonography
Dialysis Technician
EMT/Paramedic
Health Information Technology
Home Health Aide
Hospital Admitting Clerk
Licensed Practical Nurse
Massage Therapist
Medical Assistant
Medical Transcriptionist
Occupational Therapy Assistant
Pharmacy Technician
Phlebotomist
Physical Therapy Assistant
Radiology Technologist
Registered Nurse
Respiratory Therapist
Surgical Technician
Ultrasound Technician/Sonographer
Unit Coordinator

BACHELOR DEGREE OR HIGHER

Anesthesiologist
Athletic Trainer
Audiologist
Chiropractor
Dentist
Dietician
Epidemiologist
Ethicist
Exercise Physiologist
Geneticist
Healthcare Administrator
Medical Librarian
Music Therapist
Nano Scientist
Nurse Practitioner
Occupational Therapist
Optometrist
Pharmacist
Physician (MD and DO)
Physician's Assistant
Physical Therapist
Psychologist
Speech Pathologist
Surgeon

COLLEGE OF LAKE COUNTY



PROGRAMS	CERTIFICATE/DEGREE	DUAL CREDIT
Dental Hygiene	Associate in Applied Science	
Health and Wellness Promotion	Associate in Arts/ Personal Training Certificate/Massage Therapy Certificate	KIN132
Health Information Technology	Certificate	
Kinesiology	Associate in Applied Science	
Massage Therapy	Certificate	
Medical Assisting	Associate in Science	BIO 149
Medical Imaging	Associate in Arts	
Nursing		
Pharmacy Technician		
Phlebotomy Technician		
Pre-Dentistry		
Pre-Medicine		
e-Occupational Therapy		
Pre-Pharmacy		
Pre-Physical Therapy		
Pre-Veterinary Medicine		
Surgical Technology		



APPRENTICESHIPS!

MANUFACTURING, ENGINEERING, TECHNOLOGY & TRADES (METT)

Learn While You Earn!

Electrical
Plumbers
Roofing
Sheet Metal
Welding
Architectural Iron Worker
BoilerMaker
Brick Layer
Carpenters
Cement Mason
Cement Mason
Cement Mason
Ceramic Tile Layer
Ceramic Tile Finisher

Drywall Finisher
Electrician Communications
Glazier
Elevator Constructor
Heat & Frost Insulator
Iron Worker
Laborer
Machinery Mover Rigger &
Erector
Operating Engineer
Operating Engineer
Technician
Painter/Decorator
Painter/Drywall

Finisher
Pipefitter
Plasterer
Plumber & Pipefitters
Roofer/Waterproofers
Sheet Metal Worker
Sprinkler Fitter
Structural Iron Workers
Technical Engineer
Teamsters
Tuck Pointer

METT APPRENTICESHIP PROGRAMS

IBEW (International Brotherhood of
Electrical Workers)
CISCO (Construction Industry Service
Corporation)
ICATT (Industry Consortium for Advanced
Technical Training)

College of Lake County Career and Job
Placement Center's Apprenticeships
TMA (Technology & Manufacturing
Association)
FFC (Foundation for Fair Contracting)

OTHER APPRENTICESHIP PROGRAMS COLLEGE OF LAKE COUNTY

- Business- Business Administration
- Education- Early Childhood Education
- Horticulture- Landscape Design,
Arboriculture, Production,
Construction & Maintenance
- Manufacturing- Precision Machining

- Technology (PMT), Industrial
Technology (INT), Automation,
Robotics & Mechatronics (ARM), &
HVAC
- Information Technology- Network
Administration & Cybersecurity